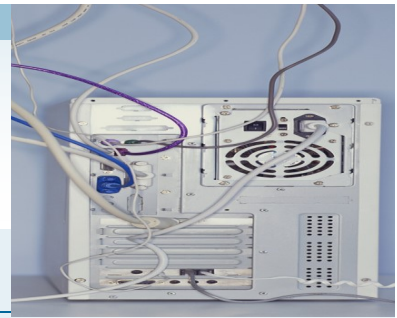


Texas Professional Home Child Care Association



The map of Texas indicates the scope of TPHCCA. The HOUSETOP represents our work in the home. The HAPPY FACE reflects the joy we find in our profession; the FOUR SUNBEAMS represent those involved in the family childcare: Parents, Children, Providers, and Texas; The RISING SUN represents the time of life cycles of the people we are influencing—CHILDHOOD.

Provider News



Inside this issue

• Messages From...	Page(s)
Executive Board Members	3-9
Region Representatives	9-11
Spotlight	12-13
Committee Chairs	3-21
Conference Coordinator	23
Conference Chairs	24-29
• Contact Information...	
2017 Board of Directors	30
2017 Region Representatives	31
2017 Committee Chairs	32
2017 Conference Committees	32
• Other Information:	
Insurance Information	20-21
Membership Benefits page	33
Sponsorship Levels	34
TPHCCA Applications:	
Membership Application	35
Association Application	28
• Small Business, Corporate, Agency Application	29



A Word from the President.....

to me Happy New Year! Another year has come and it's my close year as the President of this wonderful association. I'm so thankful for all of you, and grateful that God granted me this opportunity to be the President. I appreciate my board for their support, the committees and conference committees for an successful 2016. It's time for our Educational Workshop's. All 8 of them have a location and presenters are being selected. I look forward to seeing renewed members, new member's and fellowshiping with everyone. Mark your calendars for our 29th Annual Educational and Enrichment Conference in Houston, TX on September 14 -17, 2017 at the Wyndham Suites - Park Central Dallas, Texas. Call to reserve your room. Your association wants to do all in its pow-

er to ensure all regions are well represented. At this time, we have Regions 2, 3, 4, 5W, 6W, 7, 8, 9, 10 and 12 that are in need of Regional Representatives. If you live in either of the areas and are interested in being a part of this awesome team, please call me or email me (See the board of Director's page). Please look out for all emails and flyers on behalf of your association. Enjoy this Spring weather. I look forward to writing you in June. By, the way if you have Facebook, like our page and you will be able to keep up with us, weekly the Facebook has a posting.

Respectfully, Patricia
Plummer Mouton



More
information
in this issue



A Word from the Past President.....

Happy 2017!

Members I wish you faith, hope and love this year. We are approaching the spring season and that means rains, sunshine, tornadoes and storms. I hope that you all have updated your emergency preparedness kits for emergencies.

As your Immediate President I'm busy assisting our new President Patricia Plummer with duties she has delegated for me to do.

I Part of my responsibilities is being the Officer over the Region for Region 5W and Region 6W, which is Tarrant County Area and surrounding cities and Austin, TX and surrounding cities. Workshop's for both of the regions will be, on April 22 for Austin, TX and May 6 for Tarrant County and surrounding cities in Arlington, TX.

Please check the website for scheduling of classes and information. I may be reached at 817-627-9454, and my email address is Cornettaroberts@gmail.com.

May God continues to bless us all.

Respectfully Submitted,

Cornetta Roberts

Immediate Past President

Continued from the Past President



Conference will be held in Dallas this year.

Wyndam Dallas Suites—Park Central

7800 Alpha Road

Dallas TX 75240

972-233-7600— Hotel Reservations

We Want to see you there ! Come Rock N
Roll into the Future with us.



A Word from the Vice President.....

Happy Spring TPHCCA...

I'm happy for this spring weather
and I hope everyone is enjoying

our spring workshops. We still have workshops available to attend. Please visit our website at www.tphcca.org for places and dates. Just click on Workshops.

Even though it's spring and early in the year the board members are already working on our 29th Annual Educational and Enrichment Conference.

I We offer up to 20 hours of training. This year, conference will be held in Dallas at the Wyndham Dallas Suites-Park Central, 7800 Alpha Rd., Dallas, Texas 75240, 972-233-7600 on September 14 thru 17.

Hope you plan to attend and stay with us, start saving now and make your hotel reservations early. Visit our website for more information.

If I can be of any assistance to you, or if you have any suggestions or concerns, please email me at ronda.smith1@tx.rr.com or call me at 972-496-2096.

Sincerely,

Ronda Smith

New

Licensing

Changes

Coming in

APRIL

Stay Tuned...

Be sure to
check for an
email from

Licensing or
check the
website



Continued from the Vice President

REMINDER:

Please log in
online to get
your self study
Available 4
Quarters a year.

REGION 5W

THIS YEARS WORKSHOP WILL
BE HERLD IN ARLINGTON.

STORE FRONT:
BETTER WAY APOSTOLIC
CHURCH

1001 S. BOWEN RD STE 1011
ARLINGTON TX 76013



A Word from the Treasurer

Welcome Members,

It is hard to believe its time for our First Quarter Newsletter.

I am mentoring the Membership Secretary—Gwen from the Houston Area and Learning the specifics of the treasurer position.

I hope you will take advantage of the remaining workshops and gear up for our Conference in September.

Come have some fun in your 50's attire and have some fun while learning from some great speakers in Early Childhood Education.

CHARITY

Collecting baby items for Love thy Baby

See the pamphlet in the charity section

[illegible]



A Word from the Membership Secretary

1st Quarter

A fabulous New Year has begun! I am Gwendolyn Lacy-Mitchell. I am excited about the new position and the new opportunity to help our Association. To me the word membership refers to servant and that is what I plan to do. It is my aim to increase the awareness that there is in numbers but I need your help to do this effectively. Tell someone who is registered/licensed provider about us or those who want to support family childcare to join us. We want to grow so that our voices are heard in the communities, state and national level. Look forward to seeing you at the workshops and Conference in Dallas.

Gwendolyn Lacy– Mitchell

Membership for 2017:

Lifetime Members:

10

Membership: 153

Associations: 1

Small Businesses: 8



A Word From Our... Recording Secretary

Greetings to TPHCCA MEMBERS ,
As this new year is already
here , so are the spring workshops , soon
it will be September and time for confer-
ence. As the new recording secretary I am
getting familiar with everything that my
new title holds and working closely with
the new Texas professional home child care
association President, Patricia Plummer in
learning all of my new duties, it is going to
be a great exciting year for TPHCCA , hope
to see everyone at the workshops , and
let's make the conference in September the
best one yet, it will be held at the
Wyndham on 7800 alpha road,

,Dallas ,Texas on September 14 , 15,16,17 ,
2017 , this year theme is ROCK N ROLL
WITH TPHCCA , come and join us as we
step back into the 50s , hope to see every-
one there.

Pam Schindler Recording Secretary

11 N/S WORKSHOP

APRIL 8 , 2017

Pilgrim Congression-
al United Church of
Christ

3115 Blogett St

Houston TX 77004

A Word From Our... 5E Representative

Greetings Everyone!!! I am Ka-
ren Lee region 5E rep. Hopefully
2017 has gotten a good start. I
enjoyed the first workshop of the year. Held in
beautiful Riesel, Texas. Thank you Pam and John
Schindler for the wonderful Breakfast and
Lunch. Please mark your calendar for the 5E
workshop on March 18,2017 set in Garland ,
Texas. I look forward to seeing you there!!
Please be encouraged to attend all of the re-
maining workshops, this year. Have a safe spring
break!!!



Karen R. Lee



A Word From Our... 6E Representative

Hello everyone,
Hello springtime , bluebonnets and beautiful Outside playtime with our children. Our spring workshops have started and off To a great start , Region 6 E , was on February 25th , 2017 in Riesel, we had 42 providers And 9 vendors .

We learned lots of new things about allergies in the child care setting, which is new to our list of mandatory state required Hours , learned how safety importance is all around us , danced and played with the music teacher and learned how important ,dirt , is to our children to be able to do so many things.

Thanks to everyone that made this workshop a success . If you were unable to make the first workshop ,don't worry there are a few more coming up ,look forward to see you soon.

Pam Schindler

Recording secretary

CONFERENCE 2018

Do you have a theme you think would be great?

Let us on the Board Know

We would love to hear from our members.

Did you get or

Renew your

CDA ?

Graduate with
your Associates,
Bachelor's or
Masters

Let us Know

We want to

celebrate with
you

A Word From Our... Officer over the Region 7

Hello Members,

Our Workshop for Region
7 will be held at Van Unit-
ed Methodist Church in
Van TX

April 29, 2017

7:30 Registration

Classes start at 8:00– 3:45

See you there.

Sincerely,

Lisa Carlson



A Word From Our... Officer over the Region 8

Greetings Member's, Region 8 Work-
shop was held on March 4, 2017 at the
Jason's Deli. There were 14 workshop
attendees. The presenters were awesome. If you
know any presenters and/or vendors in the Cor-
pus Christi surrounding areas, that would like to
exhibit their products to our members
and present to our doing the training, please
pass my information on to them. Information is
on the Board of Director's Page. Mark your cal-
endars for next year's workshop. Also, mark
your calendars for conference in Dallas on Sep-
tember 14-17, 2017. As we approach the hot
temperatures soon, remember to drink plenty of
fluids, and give the little one's water to. Be
blessed Region 8! Patricia Plummer Mouton





A Word From Our... 5W Representative

May 6, 2017

STORE FRONT:

Better Way Apostolic Church

1001 S. Bowen Rd STE 1011

Arlington TX 76013

Please contact for more Information:

Past President

Cornetta Roberts

817-627-9454

Did you
attend a class
outside

TPHCCA— IS
there a speaker
you liked?

Get us their
contact information
so we

can possibly
use them in
the future

Inside Story Headline

Do you know
of someone
in the Associ-
ation that
needs our
Attention- Are
they having
surgery etc.

Let the Board
know— call
or email us.

A Word From Our... Officer over the Region 6W

April 22, 2017

Child Care Inc

825 53 1/3 Street

Austin TX

78751

Please Contact
for More infor-
mation

: Past President

Cornetta Roberts

817-627-9454





A Word From Our... 11 Representative

Greetings,

My name is Lisa Marie Harris. I have been serving as Exhibitor Sub-Chair for the past 3 years. I have gained some new friends. I enjoyed working with each exhibitor and vendor. The 2016 Conference was out of sight. We had more exhibitors and vendors participation then we had the following year. What a good group of loving and supportive people! Sad but a little excited to say that I have taken on a new position with TPHCCA.

I am your new 11S Regional Representative of Texas Professional Home Child Care Association. I am so excited to represent the Houston area. Although the challenge is great, I intend to fulfill my duties with grace and humility.

Our Houston Workshop is scheduled for April 8, 2017. The topics are very helpful to our daily child care services. The presenters are excited and ready.

Please come and support.....

Respectfully,

Lisa M. Harris

Do you know of a
Organization in the
Houston area that is
PRIVATELY funded
that deals with Chil-
dren ?

IF so please give the
information to the
President or anoth-
er Board Member
so that We may
check this Associa-
tion out

For next year's
Conference



Heard a
Great Speaker
at another
training.

Get us the
contact in-
formation-

We would
love to talk
with them.

A Word From Our... Officer over the Region 9

Hello Members,

It is Spring Time already.

Our Workshop for Region
9 will be held at the

Education Service Center
REGION 20

1314 Hines Ave

San Antonio TX

May 20, 2017

7:30 Registration

Classes start at 8:00– 3:45

See you there.

Sincerely,

Lisa Carlson



WE ARE LOOKING FORWARD TO
SEEING YOU AT OUR
CONFERENCE IN DALLAS
SEPTEMBER 14-17, 2017





Spotlight

January :

Shannon Holt and her daughter, Ashley Johnson, completed their Child Development Associates (CDA)

MARCH:

Lisa Carlson Celebrated 13 years providing care for children.

Awaiting CDA Renewals to come thru:

Angelica Flores and Floralba Narva-
rez

Viola's House

There will be a collection box at conference for twin sheets, soaps , paper towels, toilet paper, towels and wash clothes

Education is
not the filling
of a pail, but
the lighting of
a fire.”

- William
Butler Yeats

Spotlight Continued



While we are sad for your
absence—WE CELEBRATE
WITH YOU ON YOUR
RETIREMENT:

RUTH JORDAN

MARGARET BARBEE

DEBBIE ALLEN

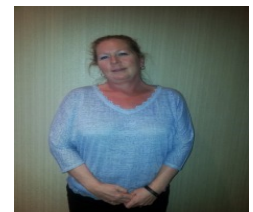
TERESA PERREZ

A Word From Our...By –Laws

We are currently working
to update all of our policies.

Sincerely,

Lisa Stocker





A Word From Our... Education Chair

Greetings TPHCCA...

Don't forget, your self-studies are available. You can do your self-study on-line. Just answer the questions and they will be emailed to me, or print the questions, answer them and mail to me.

Ronda Smith

1609 Gloucester Dr.

Garland, Texas 75044

You must pass the quiz with 70% before I will mail your certificate along with the corrected answers. Please allow four weeks to receive your certificate. When you receive your certificate, file it with the self-study article and attach your answers.

If you should have any questions or concerns, please contact me at ronda.smith1@tx.rr.com or call me at 972-496-2096.

Respectfully Yours,

Ronda Smith

2017 Conference

September 14-18,
2017

Wyndam Dallas
Suites– Park Central

7800 Alpha Road

Dallas TX 75240

(972)233-7600

Call to Book your
Room Now

Rock N Roll with
T.P.H.C.C.A.



Get Ready for some
FUN !

Watch for more
information

REPRESENTATIVES
NEEDED

WE NEED YOU !

Ask how you
can become a
REGION Rep to-
day.

Get with Presi-
dent Patricia
Plummer, Past
President—
Cornetta Rob-
erts or another
member of the
Board

A Word From Our.. Elections Chair

Hello Members of
TPHCCA,

We have TPHCCA com-
mittee chairs open, sev-
eral regions without Re-
gion Representatives
that we need for 2017. If
you would like to serve
on a committee and pos-
sibly work your way up
to a Region Representa-
tive please contact Patri-
cia Plummer.

Any questions may be
directed to Patricia
Plummer 281-209-3331.

Sincerely,
Sylvia Lee



A word from the Historian

There is nothing to
report currently





A Word From Our... Fundraising Chair

While it is Spring and September seems so far away. It will be here before you know it and then comes our Conference.

Currently there is nothing new to report.

Inside Story Headline

This story can fit 150-200 words.

One benefit of using your newsletter as a promotional tool is that you can reuse content from other marketing materials, such as press releases, market studies, and reports.

While your main goal of distributing a newsletter might be to sell your product or service, the key to a successful newsletter is making it useful to your readers.

A great way to add useful content to your newsletter is to develop and write your own articles, or include a calendar of upcoming events or a special offer that promotes a new product.

You can also research articles or find "filler" articles by accessing the World Wide Web. You can write about a variety of topics but try to keep your articles short.

Much of the content you put in your newsletter can also be used for your Web site. Microsoft Publisher offers a simple way to convert your newsletter to a Web publication. So, when you're finished writing your newsletter, convert it to a Web site and post it.

Inside Story Headline

This story can fit 75-125 words.

Selecting pictures or graphics is an important part of adding content to your newsletter.

Think about your article and ask yourself if the picture supports or enhances the message you're trying to convey. Avoid selecting images that appear to be out of context.

Microsoft Publisher includes thousands of clip art images from which you can choose and import into your newsletter. There are also several tools you can use to draw shapes and symbols.

Once you have chosen an image, place it close to the article. Be sure to place the caption of the image near the image.

A Word From Our.. Publications Chair



Hello Members,

I have been working on giving our newsletter a different more

Professional Look.

We have added so many different Features .

Sincerely

Lisa Carlson



A Word From Our... Public Policy Chair

Hello Member's,
Happy New Year!

Texas Association for the Education of Young Children will be traveling to Austin Texas

March 23 2017 9:00 AM to
3:00 PM

Location

Texas State Capital, Austin
Texas

Patricia Plummer

Inside Story Headline

This story can fit 150-200 words.

One benefit of using your newsletter as a promotional tool is that you can reuse content from other marketing materials, such as press releases, market studies, and reports.

While your main goal of distributing a newsletter might be to sell your product or service, the key to a successful newsletter is making it useful to your readers.

A great way to add useful content to your newsletter is to develop and write your own articles, or include a calendar of upcoming events or a special offer that promotes a new product.

You can also research articles or find "filler" articles by accessing the World Wide Web. You can write about a variety of topics but try to keep your articles short.

Much of the content you put in your newsletter can also be used for your Web site. Microsoft Publisher offers a simple way to convert your newsletter to a Web publication. So, when you're finished writing your newsletter, convert it to a Web site and post it.

Inside Story Headline

This story can fit 75-125 words.

Selecting pictures or graphics is an important part of adding content to your newsletter.

Think about your article and ask yourself if the picture supports or enhances the message you're trying to convey. Avoid selecting images that appear to be out of context.

Microsoft Publisher includes thousands of clip art images from which you can choose and import into your newsletter. There are also several tools you can use to draw shapes and symbols.

Once you have chosen an image, place it close to the article. Be sure to place the caption of the image near the image.

A Word From Our... Regulated Home Concerns Chair



Want to make a difference for future of our country? It starts with funding to improve Early Childhood Education! Numerous studies show connection with high quality ECE to well adjusted, educated and emotionally stable adults.

CONTACT D.C. TODAY 202-225-4201

Here is script:

Hi, my name is _____ and I'm a constituent of Representative _____.

I'm calling because child care is an important issue for American families.

I know that April 6th is the deadline for Rep. _____ to make an appropriations request to the Chairman, and I'd like for him/her to prioritize an increase for child care.

Specifically, I hope Rep. _____ will ask for a \$1.4 Billion increase in C-C-D-B-G, because child care helps parents go to work and helps children get the good start that they need. Thank you for your time.

Without this additional \$1.4 billion, states will not be able to implement the important reforms contained in the CCDBG Act of 2014 while maintaining the current number of children served. Already, there has been a significant decline in the number of children served, with 373,100 fewer children receiving child care assistance in 2015 than in 2006. Congress needs to hear about the importance of funding a strong foundation for child care and early learning through CCDBG.

Thank you in advance! NAEYC Conscious Discipline®
Childcaregroup Dallas @Be_Seed_Change



A Word From Our Insurance Chair... Insurance Chair



ACC – MORE THAN INSURANCE, JOIN OUR GROUP!!!



www.assurechildcare.com

The industry's leading insurer of child care professionals is

NOW AVAILABLE ONLINE!!!

**Apply & Submit Online!
Receive Quotes in Seconds!**

**Secure Online Payments!
Pick Your Own Limits!**

**Save time & money by taking advantage of all the news,
information and features that our website can offer you!**

Children are like child care services, they come in all shapes and sizes. Insurance programs are no different, and that's where we hope to help. Finding the right insurance program for your business should be as easy as running down a checklist...

Things To Look For In Insurance...

1. Sound & stable insurance company?
2. Is the Child Care Provider covered?
3. Is coverage available for all my placements?
4. Can I name additional insureds on the policy?
5. *Make sure Field Trips are covered...*
6. Can others be covered on my policy?
7. Are abuse & molestation covered?
8. What about my helper's car?
9. What about things that aren't so ordinary?
10. Are payment plans available?

The Assure Child Care Program...

- ✓ Philadelphia Insurance Co – Rated A++
- ✓ Provider is covered - At no extra charge!
- ✓ Coverage available to licensed capacity!
- ✓ Yes, Additional Insured parties can be named!
- ✓ All Field Trips and special events are covered!
- ✓ Coverage for helpers, subs and Provider's own kids!
- ✓ Yes, abuse & molestation are 100% covered!
- ✓ Non-owned auto coverage is available as an add-on!
- ✓ We cover admin hearings to pets to pools! Ask us!
- ✓ **YOU** choose the payments you can afford!



Assure Child Care & Hays Companies
80 South 8th Street, Suite 700
Minneapolis, MN 55402 Phone No.: 612-486-4752
Toll Free: 855-818-KIDS (5437)
Email: info@assurechildcare.com Web: www.assurechildcare.com



Administered by:
HAYS COMPANIES
IDS Center, Suite 700
80 South 8th Street
Minneapolis, Minnesota 55402

Community Child Care Partnership

To better serve our members, a portion of our fees are used to support and assist state and local child care associations and organizations to address specific needs in their communities. You, as a member, may designate which association or organization, participating in the Assure Child Care's "Community Partnership" program, you wish to support. Please choose and list only one selection in the space provided in the application form. If you are unsure whether your selection is a program participant, you may contact them or the Assure Child Care office. If your association or organization is not currently a participant and you would like more information on the program, please contact the Assure Child Care office.

National Group Rates¹

Rates effective 11/01/2012

* NUMBER OF CHILDREN	Maximum Limits Available for Annual Premiums					
	¹ Includes maximum \$10,000 Accidental Medical Expense, Accidental Death & Accidental Dismemberment Coverage.					
	FULL PREMIUM OR FIRST PAYMENT, PLUS SERVICE CHARGE, DUE UPON ENROLLMENT					
	You need to pay the first payment as listed below if you choose Payment Plan. You will be billed for seven payments, one every 30 days.					
	ONE YEAR ANNUAL PREMIUM					
	\$300,000 Occurrence \$600,000 Aggregate		\$500,000 Occurrence \$1,000,000 Aggregate		\$1,000,000 Occurrence \$3,000,000 Aggregate	
	FULL PREMIUM	PAYMENTS ²	FULL PREMIUM	PAYMENTS ²	FULL PREMIUM	PAYMENTS ²
1-6 Children	\$320	\$40	\$368	\$46	\$408	\$51
7 Children	\$344	\$43	\$376	\$47	\$424	\$53
8 Children	\$400	\$50	\$424	\$53	\$472	\$59
9 Children	\$464	\$58	\$520	\$65	\$576	\$72
10 Children	\$520	\$65	\$568	\$71	\$648	\$81
11 Children	\$560	\$70	\$608	\$76	\$696	\$87
12 Children	\$632	\$79	\$672	\$84	\$760	\$95
13 Children	\$672	\$84	\$712	\$89	\$808	\$101
14 Children	\$712	\$89	\$768	\$96	\$864	\$108
15 Children	\$752	\$94	\$824	\$103	\$920	\$115
16 Children	\$792	\$99	\$888	\$111	\$984	\$123
17 Children	\$824	\$103	\$944	\$118	\$1,040	\$130
18 Children	\$864	\$108	\$1000	\$125	\$1,096	\$137
19 Children	\$904	\$113	\$1,056	\$132	\$1,152	\$144
20 Children	\$944	\$118	\$1,112	\$139	\$1,208	\$151
Non-sufficient Funds Fee: We charge a fee for every check returned to us for non-sufficient funds.						
² There is an additional \$7.00 service charge for each separate payment.						
All rates are subject to change.						

Important: Application Checklist

To ensure your application is complete, please make use of the following checklist. Missing information may cause a delay in obtaining insurance coverage.

<input type="checkbox"/> Complete All Questions	<input type="checkbox"/> Select Limits of Liability Coverage	<input type="checkbox"/> Sign & Date Application Form
<input type="checkbox"/> Include Annual Membership Fee		
<input type="checkbox"/> Enclose Full Premium or Premium Payment with Service Charge		

A Word from the Webmaster



1st Quarter 2017 Website Report – TPHCCA website www.tphcca.org *Prepared by Pam Ball of Pam Ball Designs www.pamballdesigns.com*

During the 1st Quarter there were 2,811 unique visitors to the website, who visited the site 3,846 times and viewed 23,077 pages. There were a total of 71,738 hits to the website during the 1st Quarter of 2017.

Here is how this compares to the same quarter previous years:

	STAT	2017	2016	2015	2014	2013
JANUARY	Unique Visitor	986	3,311	1,739	574	418
	Times Visited	1,341	5,102	3,048	1,233	712
	Pages Viewed	9,197	20,049	11,318	4,160	3,558
	Total Hits	24,147	51,792	25,179	16,459	14,833
FEBRUARY	Unique Visitor	729	737	1,326	534	387
	Times Visited	1,015	1,192	2,159	1,234	654
	Pages Viewed	7,137	6,093	16,109	18,689	2,616
	Total Hits	20,882	20,682	32,750	50,446	3,190
MARCH	Unique Visitor	1096	463	1,342	728	422
	Times Visited	1,490	830	2,312	1,544	677
	Pages Viewed	6,743	10,246	14,995	15,819	3,190
	Total Hits	26,709	25,339	44,254	37,409	12,485

The following updates have been made to the TPHCCA website during the 1st Quarter of 2016

- ✓ Added 4th Quarter Newsletter
- ✓ Updated 4th Quarter Newsletter 3 times.
- ✓ Updated Membership Applications for 2017
- ✓ Updated 2017 Workshop Page 6 times
- ✓ Updated 2017 Conference Committee Page
 - ✓ Updated Conference Page 2 times
 - ✓ Added 8 Workshop Flyers
 - ✓ Updated Workshop Flyers 15 times
 - ✓ Update board member's page
 - ✓ Added 75 Member Pages
- ✓ Added 7 Business Members to Business Pages
- ✓ Added 2 Associations to Members Pages
 - ✓ Added 30 member passwords
 - ✓ Updated Website to WP 4.7.3
 - ✓ Updated 4 Plugins on the WP server
- ✓ Submitted the website to 25 search engines
- ✓ Received & responded to 10 phone calls
- ✓ Received & responded to 256 emails



A Word From Our... Conference Coordinator

Greetings Member's!

Wow...this is our first news letter of the year and there is so much to inform you about Texas Professional Home Child Association 29th Annual Educational and Enrichment Conference! Mark your calendars for September 14-17, 2017 at the Wyndam Hotel Park Central Suites in Dallas, TX.

Now...conference begins on a Thursday evening, so make plans to come out to the 1st session of the conference. The class will start at 6pm. Right after the 1st session is our TPHCCA Committee Session Bingo Game. Come out and gain knowledge on how you can be more than a member, you will gain knowledge on positions on the board, committees and conference committee. There will also be prizes for the winners.

Well, you ask what do I wear....Lol, we are going back into the 50's and 60's area of Rock n- Roll! So, grab those poodle skirts, saddle shoes, or even roll up you some jeans with a white shirt, and sweater and let's rock and roll at our Karaoke and Dance, after the Awards Dinner. You don't won't to miss out on all the fun and fellowship.

You can reserve your rooms now! Info is on the website at tphcca.org.

So, Mark your calendars!

Respectfully Submitted,

Cornetta Roberts

Conference Coordinator





A Word From Our... Administrative Chair

Greetings TPHCCA Members...

Just letting you know I have been communicating with the Exhibit Chair,

Door Prize Chair and Resource Chair to get everything ready for conference.

I've been helping our conference coordinator out. We want everyone to have a Rock N Roll time. Now is the time to start saving for conference.

If you know anyone that would like to exhibit at conference or donate any door prizes or resources please contact me at ron-da.smith1@tx.rr.com

or call me at 972.496.2096.

Best Wishes,

Ronda Smith

A Word From Our Program Chair...

Hello everyone!

My name is Lorraine Perry and I'm your Program Chair for the 29th Annual Conference.

Doing this time of preparation for conference I have sent out over 20 proposals to potential presenters for our conference. At this time the Keynote Speakers have been selected and 2 presenters for breakout sessions.

If you have information on potential presenters or someone you would like to hear, and that will do the session Pro-Bono feel free to contact me at F4everraine@verizon.net or call me 214-770-3691 leave a message and I will return your call. Blessings to all.

Respectfully Submitted,

Lorraine Perry
Program Chair

Inside Story Headline

This story can fit 150-200 words.

One benefit of using your newsletter as a promotional tool is that you can reuse content from other marketing materials, such as press releases, market studies, and reports.

While your main goal of distributing a newsletter might be to sell your product or service, the key to a successful newsletter is making it useful to your readers.

A great way to add useful content to your newsletter is to develop and write your own articles, or include a calendar of upcoming events or a special offer that promotes a new product.

You can also research articles or find "filler" articles by accessing the World Wide Web. You can write about a variety of topics but try to keep your articles short.

Much of the content you put in your newsletter can also be used for your Web site. Microsoft Publisher offers a simple way to convert your newsletter to a Web publication. So, when you're finished writing your newsletter, convert it to a Web site and post it.

Inside Story Headline

This story can fit 75-125 words.

Selecting pictures or graphics is an important part of adding content to your newsletter.

Think about your article and ask yourself if the picture supports or enhances the message you're trying to convey. Avoid selecting images that appear to be out of context.

Microsoft Publisher includes thousands of clip art images from which you can choose and import into your newsletter. There are also several tools you can use to draw shapes and symbols.

Once you have chosen an image, place it close to the article. Be sure to place the caption of the image near the image.



A Word From Our.. Registration Chair



NOTHING AT THIS TIME TO REPORT

A word from Our Resource Sub-Chair.....

Greetings,

My name is Edith Shepard your resource chairperson for conference.

At this time I have been gathering information for resources for the conference bags.

You will only have a few catalogs, other items will be lotions, hand sanitizers, snacks and so on.

Enjoy the Spring Weather. God bless you all.

Respectfully Submitted,

Edith Shepard

A Word from the Door Prize Sub-Chair

Hello TPHCCA

My committee and I have been very busy collecting door prizes for conference.

If you or anyone you know would like to donate door prizes please contact

Ronda Smith at ronda.smith1@tx.rr.com or call 972-496-2096.

Thank you,

Sylvia lee



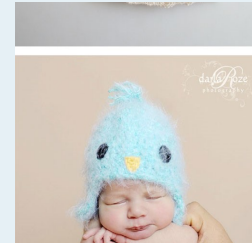
A Word From Our... Charity Chair

Greetings ,

I would like to take time to ask everyone For a donation for the LOVE THY BABY CHARITY , we will be taking items for the babies from now until conference in September, items the babies need; Sleepers, onesies, socks, t-shirts Blankets , booties, baby caps, quilts, Hygiene products , are some ideals of Useful donations.

If you prefer, you may Wish to donate baskets of items such as kitchen items , jewelry baskets , spa items, these are just a few ideals of things for the silent auction, these items will be available for bid to the highest bidder at the silent auction at conference , all proceeds go to the LOVE THY BABY CHARITY. Thank you in advance for your donation.

Charity chair John Schindler



A Word From Our.. Charity Chair Continued

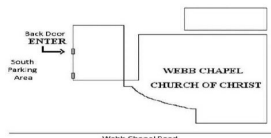


Meeting Schedule

Our **monthly meeting** is held on the first Saturday of each month (see our blog for exceptions due to space availability/holidays). **Weekly work meetings** are held every Thursday (except holidays). Volunteers cut fabric, sew, crochet, knit, iron, tear flannel, organize and package donations. Volunteers work 10:00am – 2:30pm, as their schedules allow. Please bring your lunch and join us!

Meeting: 1st Saturday of each month
Workdays: Every Thursday
Time: 10:00 a.m. to 2:30 p.m.
Location: Webb Chapel Church of Christ
13425 Webb Chapel Road
Farmers Branch, Texas 75234

The location for our monthly meeting and workdays is about four blocks north of Valley View Lane on the west side of Webb Chapel Road. Use the parking area on the south side of the building and enter the second door on the side.



Love Thy Baby Love Thy Neighbor, Inc.

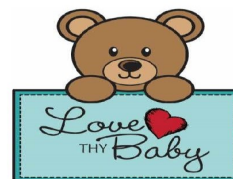
P.O. Box 1732
Coppell, TX 75019

lovethybaby@LTNlovethyneighbor.org

BLOG: www.lovethybaby.blogspot.com

WEB: www.LTNlovethyneighbor.org

www.facebook.com/lovethybaby



Love Thy Neighbor, Inc. (LTN) is a North Texas based 501(c)3 organization committed to supporting individuals and families who need nutrition and clothing, and newborns who are born into health or economic crisis. The Love Thy Baby (LTB) program donates blankets, baby clothes and other essential items through hospitals and agencies that provide for premature and newborn infants. All items are given free of charge.

With the help and support of her family and friends, Patricia Clay-Jolly founded this group in October 1999. For the first 15 years we served as a local chapter of Newborns in Need and in January 2015, we joined the Love Thy Neighbor family and became Love Thy Baby. LTB volunteers sew, quilt, knit and crochet quilts, blankets, clothes, hats, booties, and other baby items. Parkland Health and Hospital System receives the majority of the donations, but support is also provided to other hospitals and local agencies that are helping to meet the needs of infants born into health or economic crisis.

Wish List

Love Thy Baby believes that all babies deserve to be clothed and snuggled in a warm blanket. Help us by donating:

Clothing & Blankets

- ♥ Onesies or t-shirts (newborn and 0-3 mo.)
- ♥ Socks or booties (newborn – 6 months)
- ♥ Sleepers, gowns, and pajamas (newborn and 0-3 months & we can store off season!)
- ♥ Receiving blankets, afghans, fleece blankets
- ♥ Quilts (36" x 42" preferred)

Materials to make blankets and clothing:

- ♥ Fabric: 100% cotton quilting fabric, flannel, cotton knits, fleece and quilt tops and panels
- ♥ Thread: Serger and general purpose polyester sewing thread in white, neutral, and pastel colors
- ♥ Quilt batting: Cotton or 80/20 blends
- ♥ Baby appropriate soft yarns in sport weight or light worsted (No wool due to allergies)

Other:

- ♥ Printing and copier services, postage
- ♥ Gift cards to stores where these items may be purchased
- ♥ Cash donations and market securities

Honor a loved one by giving an honorarium or memorial gift in their name. These gifts will be graciously acknowledged to your loved one or their family.

Dallas Area Need



Parkland Health & Hospital System delivers ~10,000 babies a year. Statistics show that 85% of these infants are born in need. Most parents are the working poor of our community. Our goal is to provide each baby in need with a blanket or quilt, a shirt, a hat, and a pair of socks or booties. Deliveries are made every month in an effort to meet the needs throughout the year.

Each year, hundreds of babies are admitted for care in the Neonatal Intensive Care Unit. Using custom patterns, we make and donate soft shirts and hats for these tiny babies.

The most heartbreaking need we must provide for is the burial layettes for the babies who lose their fight for life. Special volunteers dedicate their time and skills to create beautiful gowns and accessories to ease the trauma of the families of these infants.

In addition to Parkland, donations are provided through John Peter Smith Hospital, PediPlace in Lewisville, Family Place, Sharing Life, Nexus & Hope 4 Refugees.

You Can Help

Donations are generously provided by volunteers, individuals, and organizations who give their time, talents, money, supplies and baby items. We are challenged each month to meet the growing needs. We would love for you to join our efforts. There are many ways you can help.

- Use your sewing, quilting, knitting, and crocheting talents to make clothing, blankets, and more at our work meetings or work from home. You can also contribute at the work meetings by cutting, ironing, designing and sorting.
- Learn to sew, quilt, knit or crochet from our experienced volunteers using tried and true patterns for free at a meeting.
- Purchase new items from our wish list (Clean, gently used newborn clothing may also be donated, but our primary need for the hospitals is new items.)
- Involve your business, school, church or other community organization by coordinating a baby shower or a sock or clothing drive.
- Make a much needed financial donation to help with the purchase of fabric, quilt batting, yarn, and sewing supplies. We can leverage your gift to make much more than money can buy at retail stores!

BOARD OF DIRECTORS

PRESIDENT

Patricia Plummer

439 Brushy Glen Drive

Houston, TX 77073

281- 682-4090

plummerpatricia@sbcglobal.net

VICE PRESIDENT

Ronda Smith

1609 Gloucester Drive

Garland TX 75044

(972)496-2096

ronda.smith1@tx.rr.com

TREASURER

Lisa Carlson

628 Tumbleweed Dr

Forney TX 75126

(972)564-6677 or (214) 236-8254

tphccatreasurer@gmail.com

RECORDING SECRETARY

Pam Schindler

1517 Rice Road

Riesel TX 76682

(254)896-2260

MEMBERSHIP SECRETARY

Gwendolyn Lacy-Mitchell

12110 E. Marsham Circle

Houston TX

(832)253-6479

tphccamembers@gmail.com

PRESIDENT'S AIDE

Region Representatives

5E REGION REPRESENTATIVE

Karen Lee (972) 218-8294

tphcca5erep@gmail.com

11N/S REGION REPRESENTATIVE

Lisa Harris (713)747-3746

livelyle@aol.com

The following Regions Need Representatives.... 1, 2, 3, 4, 5W, 6W, 7 , 8 , 9 , 10, 11S, 11N, 12

The duties of region representatives is to Represent their respective regions at all functions of the state association, such as Board of Directors' meetings and the annual business meeting. Each Regional Representative will put on a Regional Workshop in their region annually. Regional Workshops are a membership drive as well as a fundraiser. Since we would like to see members receive other benefits, all Regional Workshops should be scheduled before May 31, unless approved by the President in advance. (See additional information under Regional Workshop Guidelines)

If you need any information regarding the above regions please contact:

President Patricia Plummer

Committee Chairs

BY-LAWS

Lisa Stocker
(972) 642-6825
mrsstocker@sbcglobal.net

EDUCATION

Ronda Smith
(972) 496-2096

MEMBERSHIP

Lisa Carlson
972-564-6677

ELECTIONS

Sylvia Lee
(972) 918-9323
dslee0853@gmail.com

FUNDING

Lisa Carlson
(972) 564-6677
tphccatreasurer@gmail.com

PUBLICITY

Jackie Lewis
214-893-1343
lewis.jackie823@gmail.com

FUNDRAISING

Pam Blackmon
(979) 778-0397
sweetp350@hotmail.com

HISTORIAN

Edith Shepard
(214) 557-2024

PUBLICATIONS

Lisa Carlson

INSURANCE

Jerletha McDonald
214-986-1912
Jerletha@yahoo.com

REGULATED

Clarissa Pitts
214-538-8808
tuacdaycare@sbcglobal.net

WEBMASTER

Pam Ball
1-866-726-8015
pam@pamballdesigns.com

PUBLIC POLICY

Patricia Plummer

CONFERENCE COMMITTEE

ADMINISTRATIVE CHAIR

Ronda Smith
972-496-2096

Ronda.smith1@txrr.com

PROGRAM CHAIR

Lorraine Perry
214-770-3691

F4everraine@verizon.net

Conference Committee

CONFERENCE COORDINATOR

CORNETTA ROBERTS

(817) 627-9454

crchildcare@sbcglobal.net

CHARITY CHAIR

JOHN SHINDLER

254-405-1007

Schindlerchevy@icloud.com

REGISTRATION CHAIR

Jackie Lewis

214-893-1343

kidsrule2005@gmail.com

Membership Benefits

Quarterly newsletter with self-study training hours approved for Texas Department of Family and Protective Services (DFPS) training requirements.

- Membership packet with Membership card, certificate & other helpful information.
- Name listed in yearly Membership Directory.
- Access to online TPHCCA Newsletter archives.
- Online registration and payment for annual conference.
- Online renewal of membership dues.
- Online registration for regional workshops.
- Regional Workshops with 5 - 6 hours of approved training available to all members.
- Board Members in region to assist with questions or problems concerning home child care.
- Legislative updates on home child care issues.
- Representation on many child care boards and committees.
- Attendance to all TPHCCA Board Meetings.

Sponsorship Levels

TPHCCA Sponsorship Levels

TPHCCA sponsorship levels will have a range for the donations and will offer incentives

Sponsor Level \$200

Listing on website for three months

Honorable Mention

Bronze Contributor Level \$500

1/4 page ad in ad calendar and logo featured on website for six months

2 Reserved sits to event

Silver Educator Level \$1000

1 1/2 page ad in ad calendar and display advertising at 1 event

Name listed on event materials and logo featured on website for six months

Featured in advertising for event

2 Reserved sits to event

Gold Scholar Level \$2500

Recognition on the organization website

Signage at the event

Recognition by event speakers from the podium.

4 Reserved sits to event

Award Reciprocate

Logo featured on website for one year on event materials

Presenting Sponsors \$5,000

Full page ad in program and display advertising at event

Featured advertising for event

Logo featured on website for one year of event

2 Reserved tables to event

TPHCCA MEMBERSHIP APPLICATION

Membership is from January 1—December 31, 2017

Please **print** your name as it appears on your DFPS registration/ license.

Last Name _____ First Name _____

Address _____ City/State/Zip _____

County _____ Region _____ Area Code/Phone Number _____

Business Name _____ License/Registration Number _____

Local Association (if member) _____ Birthday _____

Email Address _____

Check one ☐ New Member or ☐ Membership Renewal (Member # _____)

Active Member

☐ Registered Child Care Home \$45.00

☐ License Child Care Home \$45.00

Must be owner, co-owner, - Current registration must be verified with Internet. If it can not be verified a copy of Registration or License will be required. Payment is required for both new members or renewals.

If you are interested in joining NAFCC please visit their website at www.NAFCC.org

Associate Member

Associate members are listed homes or employees of a Licensed child care home.

☐ Associate \$45.00

Child Advocacy Member

Person or group interested in the welfare of all children in Child Care, such as Directors/employees of Licensed Child Care Centers, Church Nurseries, Private Company Child Care Facilities and advocates for children.

☐ Child Advocacy \$45.00

Would you be interested in serving on any of the following Texas Professional Home Child Care Committees? Please check areas of interest.

☐ By-Laws ☐ Education ☐ Election ☐ Fundraising ☐ Funding ☐ GDH Concerns ☐ RFH Concerns

☐ Insurance ☐ Public Policy ☐ Newsletter ☐ Historian ☐ Membership ☐ Publicity ☐ Web Page

**By becoming a member, I agree to support the goals of
Texas Professional Home Child Care Association.**

Signature _____ Date _____

Form MUST BE FILLED OUT COMPLETELY.

If you have any questions about the form please contact Lisa Carlson at (214) 236-8254 or
tphccamembers@gmail.com

Send membership application along with a Check or Money Order payable to:
TPHCCA~ c/o Lisa Carlson 628 Tumbleweed Dr Forney TX 75126
(There will be a \$30.00 fee on all returned checks.) Questions? call (972) 293-7673
Cancellations are non-refundable and non-transferable. Please allow 6 weeks for processing.

Association Application

Child Care Association
2017 Association
Membership Application
January 1st to December 31, 2017

Name of Association _____

Address _____

City, State, and Zip Code _____

Region the association serves _____

_____ Association Membership is \$50.00 annually

_____ 100% Membership is \$0.00 annually **IF** all
your members are individual members of TPHCCA. Please submit
your roster of members.

Please enclose your check or money order payable to: TPHCCA
Send to:

Lisa Carlson- Treasurer
628 Tumbleweed Dr
Forney, TX 75126
tphccatreasurer@gmail.com

For questions regarding payments, please call (972) 564-6677

If any further membership information is needed, please contact:

Lisa Carlson
TPHCCA Membership Secretary Assistant
628 Tumbleweed Dr
Forney, TX 75126
(214) 236-8254
tphccamembers@gmail.com

Small Business and Corporate Application

TEXAS PROFESSIONAL HOME CHILD CARE ASSOCIATION

2017 Small business, Agency and Corporate Membership

Membership is from January 1—December 31, 2017

Please Print

Name of Company: _____

Address: _____

City, State, Zip Code: _____

Name of contact Person: _____

Phone Number: _____

E-Mail Address: _____

Web Site: _____

Small In-Home Business \$60.00

Small in-home business members are small in-home businesses that provide services that would enhance either the child care business or the provider. These small in-home business members shall fall under a similar category as Tupperware Dealers, Independent Avon Representatives, Discovery Toys Distributors, Mary Kay Consultants, etc. These shall be based out of their home.

Agency Membership \$70.00

Agency members are either government agencies or Non-Profit 501 C (3).

Corporate Membership \$95.00

Corporate Member are corporations that provide services that would enhance both the child care business and the provider. These are based only on store front capacity.

Signature: _____ Date: _____

Send Membership Application and a Check or Money Order payable to:

TPHCCA ~ Lisa Carlson
628 Tumbleweed Dr, Forney TX 75126
(972) 564-6677

email: tphccatreasurer@gmail.com

(There will be a \$30.00 fee on all returned checks.)

Cancellations are non-refundable and non-transferable. Please allow 6 weeks for processing.